



## ARAL G



Chemical solution to dissolve gypsum and tartar residues on removable prostheses.

### Features:

- Quick action
- It does not affect the resin
- Practical and functional
- To be used with ultrasonic washing machines
- Acid base

**Packaging:** 1 kg bottle

**Code:** ULT000030

## CHELA GESS



Hydrofluoric acid based solution for the removal of phosphate investment and ceramic from metallic structures.

### Features:

- Can be used with ultrasonic washing machines (always use plastic containers)
- Quick action
- It does not affect noble metal (corrodes titanium)
- Pickling action
- Do not use with palladiated alloys with high silver content and with titanium alloys
- **Attention: contains hydrofluoric acid**

**Packaging:** 1 l bottle

**Code:** ULT000010

## DEK ACCIAIO



Pickling agent for metals ideal for pickling stainless steel.

### Features:

- Ready for use
- To be used cold or at a max. temperature of 40°C
- It eliminates green oxidation
- **Attention: contains hydrofluoric acid**

**Packaging:** 1 l bottle

**Code:** DEC000050

## TENSITOL



Chemical concentrate with high power degreasing surfactants.

### Features:

- Energetic action
- Perfect cleaning
- It does not affect any product
- Extremely effective with ultrasonic and heated washing machine

**Packaging:** 1 kg bottle

**Code:** ULT000060

## DELACROM



Special solution to dissolve gypsum and alginate residues from impression trays, resin prostheses and instruments.

### Features:

- It does not damage the impression tray
- Quick action
- Easy to use

**Packaging:** 1 l bottle

**Code:** POR000030

## CLEAR GIPS



Chemical solution to dissolve gypsum in removable prostheses.

### Features:

- Acid free
- Practical
- Acts in short time
- To be used with ultrasonic washing machines
- Not acid

**Packaging:** 1 l bottle

**Code:** ULT000090

## SCHELETRIX



Chemical solution for electrolytic polishing of chrome cobalt. Long-lasting effect for brilliant surfaces.

### Features:

- Polishing without streaks
- Long bath duration

**Packaging:** 1 l bottle

**Code:** ELE000040

## DEKUR KERAMIK



Cleaner, developed for the deoxidation of highly palladiated alloys.

### Features:

- Ready for use at 50/60° C
- Eliminates oxides
- Not effective with alloys containing more than 10% of silver

**Packaging:** 1 l bottle

**Code:** DEC000030

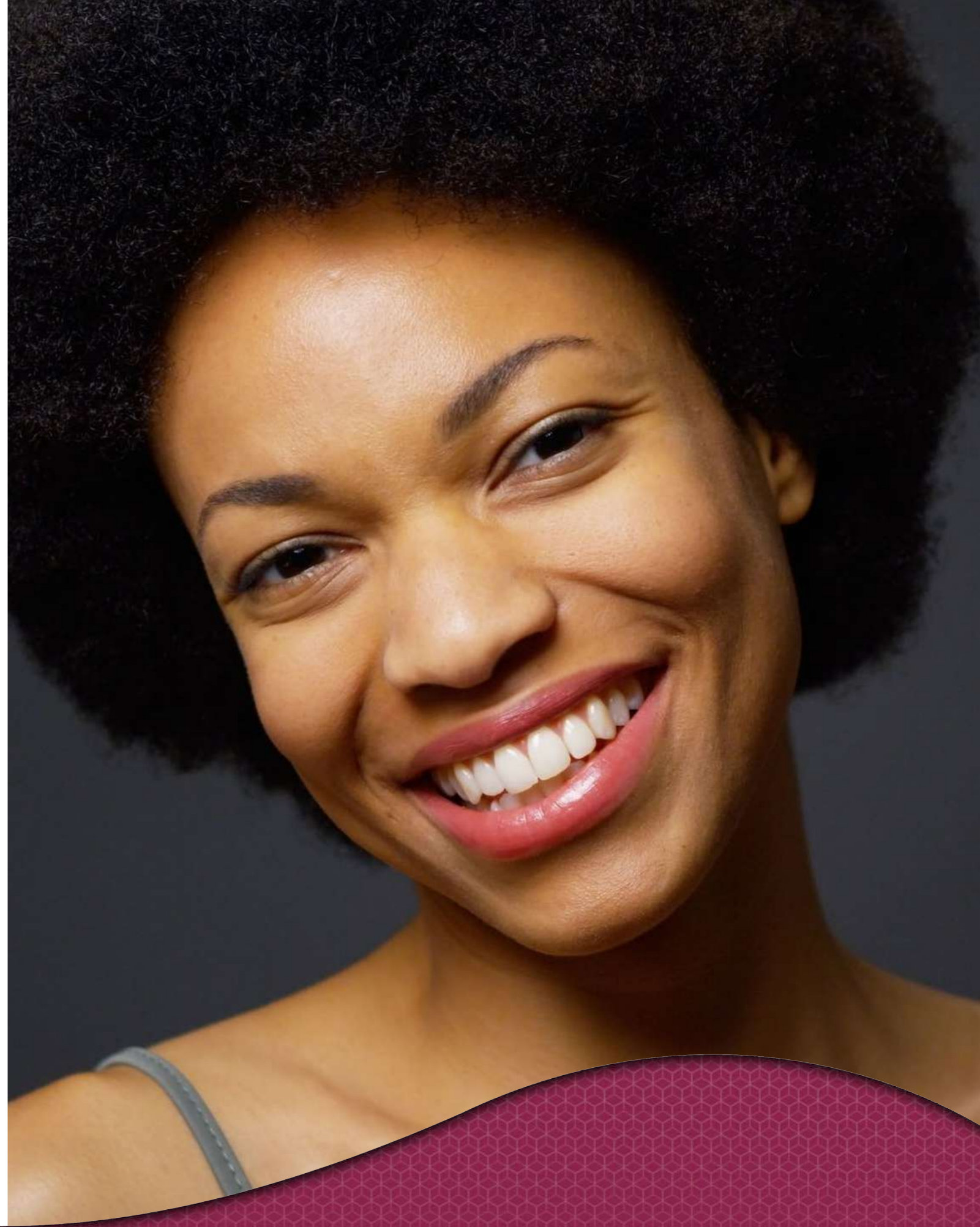
## NEW RANDOX

Pickling agent in powder, substitute for sulphuric acid in the treatment of precious alloys.

### Features:

- Pickles palladiated alloys for resin. Effective at 40/50° C

**Packaging:** 300 g can | **Code:** DEC000013



## MODELLING WAX



### MODELLING WAX

Extremely compatible with all the waxes of the line.  
Available in two hardness variants: REGULAR and HARD.

#### Features:

- It does not produce tension in the structure during modelling.
- The addition of hot wax is performed extremely easily, without forming steps and union lines that are hard to eliminate.
- Extremely short cooling time, thus reducing the work times.
- Thanks to its stability, the regular wax can be used as cervical wax.

**Packaging: 75 g box**

Codes:	CER110-2075	75g	beige	(HARD)
	CER110-3075	75g	grey	(HARD)
	CER110-4075	75g	blue	(HARD)
	CER120-2075	75g	beige	(REGULAR)
	CER120-3075	75g	grey	(REGULAR)
	CER120-4075	75g	blue	(REGULAR)

## HD WAX



### HD (High Definition) MODELLING WAX

New state-of-the-art composition extremely compatible with all the waxes of the line.

#### Features:

- It does not produce tension in the structure during modelling.
- The addition of hot wax is performed extremely easily, without forming steps and union lines that are hard to eliminate.
- Extremely short cooling time, thus reducing the work times.
- Quick modelling with an extremely precise definition of details
- Ideal for all materials such as disilicates, pressed ceramics, etc.
- Excellent for modelling the crown anatomy.
- Colour: light teal

**Packaging: 75 g box**

Code: CER100-7075

## CERVICAL WAX YELLOW



### YELLOW CERVICAL WAX

Free from tension and retraction, it is ideal to obtain a precise and stable marginal closure.  
As it is soft and not sticky, it enables simple and fast finishing, without compromising precision.

**Packaging: 75 g**

Code: CER140-6075

## TESTABLE WAX



### ORAL CAVITY TESTABLE WAX

Indicated for the construction of a device entirely made of wax that is able to give a larger amount of useful information for the construction of the prosthesis, which - at the same time - is tested and made functional in the oral cavity.

#### Features:

- Made up of a mixture of waxes and resins
- Capacity to withstand the forces that are exerted in the patient's mouth during the test
- Useful on combined prosthesis works
- Colour: opaque white, A3

**Packaging: 75 g / 150 g box**

Codes:	CER130-B075	75 g	opaque white
	CER130-B150	150 g	opaque white
	CER130-A3075	75 g	A3
	CER130-BA3150	150 g	A3

## PINK FLANGE WAX



### PINK FLANGE MODELLING WAX

The density of this wax enables fast modelling of gums.

#### Features:

- Extremely stable
- Free from retraction
- In the finishing of collars, the tooth will remain completely clean
- Excellent consistency for a quick removal of the material
- Pink

**Packaging: 500 g box**

Code: CER210-8500

## SHEETS



### PALATE PINK WAX SHEETS

Wax for sheet modelling; it makes the removable prosthesis constructions perfect.

**Colour and packaging: pink - 500 g box**

Code: CER6500



### BEIGE STICKY WAX

Wax to merge and fix both gypsum and resin. Not to be used for casting, as it produces residues during combustion.

#### Features:

- Fluid consistency to cool down extremely quickly
- Very strong and little fragile

**Colour and packaging:** beige - 150 g box

Code: CER180-2150



### WHOOPY WIRE WAX

Wire wax free from tension and elastic memory. Its high stability enables the easy fixing of the elements to be melted

*Diameter: 3 mm / 4 mm / 5 mm*

**Colour and packaging:** blue - 250 g box

Codes: CER743 3 mm  
CER744 4 mm  
CER745 5 mm

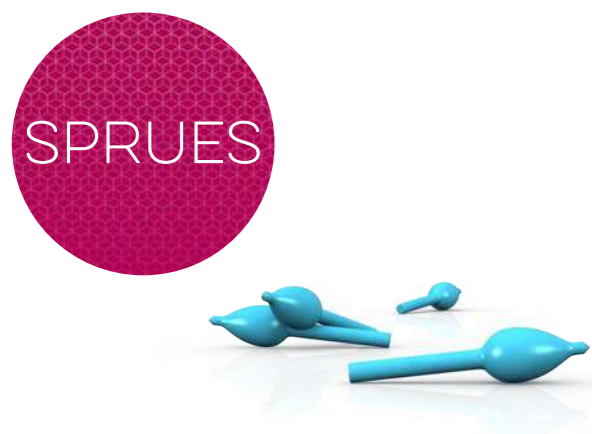


Casting canals are characterised by an extremely easy piece filling, while the canal shape enables perfect positioning in the cylinder.

With an initial calculation of the weight of buoys and the modelled piece, it is possible to compensate for the alloy contractions during cooling.

**Colour and packaging:**  
blue - box containing 80 pieces / 90 pieces

Codes: CER190-0580 80 pcs. - 12 mm  
CER190-0590 90 pcs. - 10 mm



### CASTING SPRUES

Sprues for direct casting, entirely made of wax with nourice, indicated for the individual casting of elements. Enables to have an alloy reserve with delayed cooling. The resulting casting will be free from porosity and particularly smooth.

*Diameter: 5 mm / 6 mm*

**Colour and packaging:** green - box containing 250 pieces

Codes: CER755 5 mm  
CER756 6 mm  
CER757 pear-shaped nourice sprues - 200 pcs.



### WHITE ASSEMBLY WAX

Its particular formula gives a soft consistency to the mixture, which makes teeth positioning easier.

#### Features:

- It is not sticky as a periphery wax
- It does not stain the tooth
- Thanks to its tenacity, you can mill teeth with the micromotor
- Assembly is completed only with this wax
- White

**Packaging:** 250 g box

Codes: CER220-6250



### STICKS FOR CASTING

Rigid sticks with round profile for the creation of stabilisation bars. With these sticks, the hinging work is made quicker, with the guarantee that when the wax model is removed there is no deformation.

*Diameter: 5 mm*

**Colour and packaging:** red - 250 g box

Code: CER7650

## BOXING WAX



Wax strips for impression boxing. Even though they are malleable and adhesive, they are very strong and remain in position even under the weight of gypsum.

**Colour and packaging:** red - box containing 25 pieces

Code: CER300-0025



Wax sticks with quadrangular profile, for impression boxing. Very malleable and adhesive.

**Colour and packaging:** red - box containing 36 pieces

Code: CER301-0036

## BITE WAX



Preformed curved wax rims for taking the bite in the oral cavity, with two hardness degrees.

**Features:**

- Flavoured

**Colour and packaging:**

red and green - box containing 96 pieces

Codes: CER6131 red hard wax rims  
CER6121 green medium wax rims



**ORANGE OCCLUSAL WAX RIMS**

High adhesion to the support splints and extremely easy positioning. In order to better use the rims, immerse the splint in hot water before putting it into the mouth. Once it cools down, it will be stable and indeformable.

**ATTENTION:** If there have been errors while taking the high parts, just immerse the splint in hot water, recompact it and take the bite again.

**Colour and packaging:** orange - box containing 100 pieces

Code: CER200-9100 orange occlusal wax rims



## PREFORMED WAX RIM

Preformed wax rims for intermediate elements. **Packaging:** individual elements 20 pcs. / 25 pcs.

"P" FORMAT PREFORMED WAX RIM		
PREFP0001	"P" LOWER FRONT Completely castable hard wax; leaves no residue. Excellent modelling with deep cavities	Pieces per pack: 25
PREFP0043	"P" RH MANDIBULAR CANINE Completely castable hard wax; leaves no residue. Excellent modelling with deep cavities	Pieces per pack: 25
PREFP0044	"P" RH MANDIBULAR FIRST PREMOLAR Completely castable hard wax; leaves no residue. Excellent modelling with deep cavities	Pieces per pack: 25
PREFP0045	"P" RH MANDIBULAR SECOND PREMOLAR Completely castable hard wax; leaves no residue. Excellent modelling with deep cavities	Pieces per pack: 25
PREFP4647	"P" RH MANDIBULAR MOLAR Completely castable hard wax; leaves no residue. Excellent modelling with deep cavities	Pieces per pack: 25
PREFP0033	"P" LH MANDIBULAR CANINE Completely castable hard wax; leaves no residue. Excellent modelling with deep cavities	Pieces per pack: 25
PREFP0034	"P" LH MANDIBULAR FIRST PREMOLAR Completely castable hard wax; leaves no residue. Excellent modelling with deep cavities	Pieces per pack: 25
PREFP0035	"P" LH MANDIBULAR SECOND PREMOLAR Completely castable hard wax; leaves no residue. Excellent modelling with deep cavities	Pieces per pack: 25
PREFP3637	"P" LH MANDIBULAR MOLAR Completely castable hard wax; leaves no residue. Excellent modelling with deep cavities	Pieces per pack: 25
REFP4005	"P" MAXILLARY PREMOLAR Completely castable hard wax; leaves no residue. Excellent modelling with deep cavities	Pieces per pack: 25
PREFP0021	"P" LH MAXILLARY CENTRAL INCISOR Completely castable hard wax; leaves no residue. Excellent modelling with deep cavities	Pieces per pack: 25
PREFP0022	"P" LH MAXILLARY LATERAL INCISOR Completely castable hard wax; leaves no residue. Excellent modelling with deep cavities	Pieces per pack: 25

## "P" FORMAT PREFORMED WAX RIM

PREFP0023	<b>"P" LH MAXILLARY CANINE</b> Completely castable hard wax; leaves no residue. Excellent modelling with deep cavities	Pieces per pack: 25
PREFP2627	<b>"P" LH MAXILLARY MOLAR</b> Completely castable hard wax; leaves no residue. Excellent modelling with deep cavities	Pieces per pack: 25
PREFP0011	<b>"P" RH MAXILLARY CENTRAL INCISOR</b> Completely castable hard wax; leaves no residue. Excellent modelling with deep cavities	Pieces per pack: 25
PREFP0012	<b>"P" RH MAXILLARY LATERAL INCISOR</b> Completely castable hard wax; leaves no residue. Excellent modelling with deep cavities	Pieces per pack: 25
PREFP0013	<b>"P" RH MAXILLARY CANINE</b> Completely castable hard wax; leaves no residue. Excellent modelling with deep cavities	Pieces per pack: 25
PREFP1617	<b>"P" RH MAXILLARY MOLAR</b> Completely castable hard wax; leaves no residue. Excellent modelling with deep cavities	Pieces per pack: 25



## "G" FORMAT PREFORMED WAX RIM

PREFG0001	<b>"G" LOWER FRONT</b> Completely castable hard wax; leaves no residue. Excellent modelling with deep cavities	Pieces per pack: 25
PREFG0043	<b>"G" RH MANDIBULAR CANINE</b> Completely castable hard wax; leaves no residue. Excellent modelling with deep cavities	Pieces per pack: 25
PREFG0044	<b>"G" RH MANDIBULAR FIRST PREMOLAR</b> Completely castable hard wax; leaves no residue. Excellent modelling with deep cavities	Pieces per pack: 25
PREFG0045	<b>"G" RH MANDIBULAR SECOND PREMOLAR</b> Completely castable hard wax; leaves no residue. Excellent modelling with deep cavities	Pieces per pack: 25
PREFG4647	<b>"G" RH MANDIBULAR MOLAR</b> Completely castable hard wax; leaves no residue. Excellent modelling with deep cavities	Pieces per pack: 25
PREFG0033	<b>"G" LH MANDIBULAR CANINE</b> Completely castable hard wax; leaves no residue. Excellent modelling with deep cavities	Pieces per pack: 25
PREFG0034	<b>"G" LH MANDIBULAR FIRST PREMOLAR</b> Completely castable hard wax; leaves no residue. Excellent modelling with deep cavities	Pieces per pack: 25
PREFG0035	<b>"G" LH MANDIBULAR SECOND PREMOLAR</b> Completely castable hard wax; leaves no residue. Excellent modelling with deep cavities	Pieces per pack: 25
PREFG3637	<b>"G" LH MANDIBULAR MOLAR</b> Completely castable hard wax; leaves no residue. Excellent modelling with deep cavities	Pieces per pack: 25
PREFG4005	<b>"G" MAXILLARY PREMOLAR</b> Completely castable hard wax; leaves no residue. Excellent modelling with deep cavities	Pieces per pack: 25



## "G" FORMAT PREFORMED WAX RIM

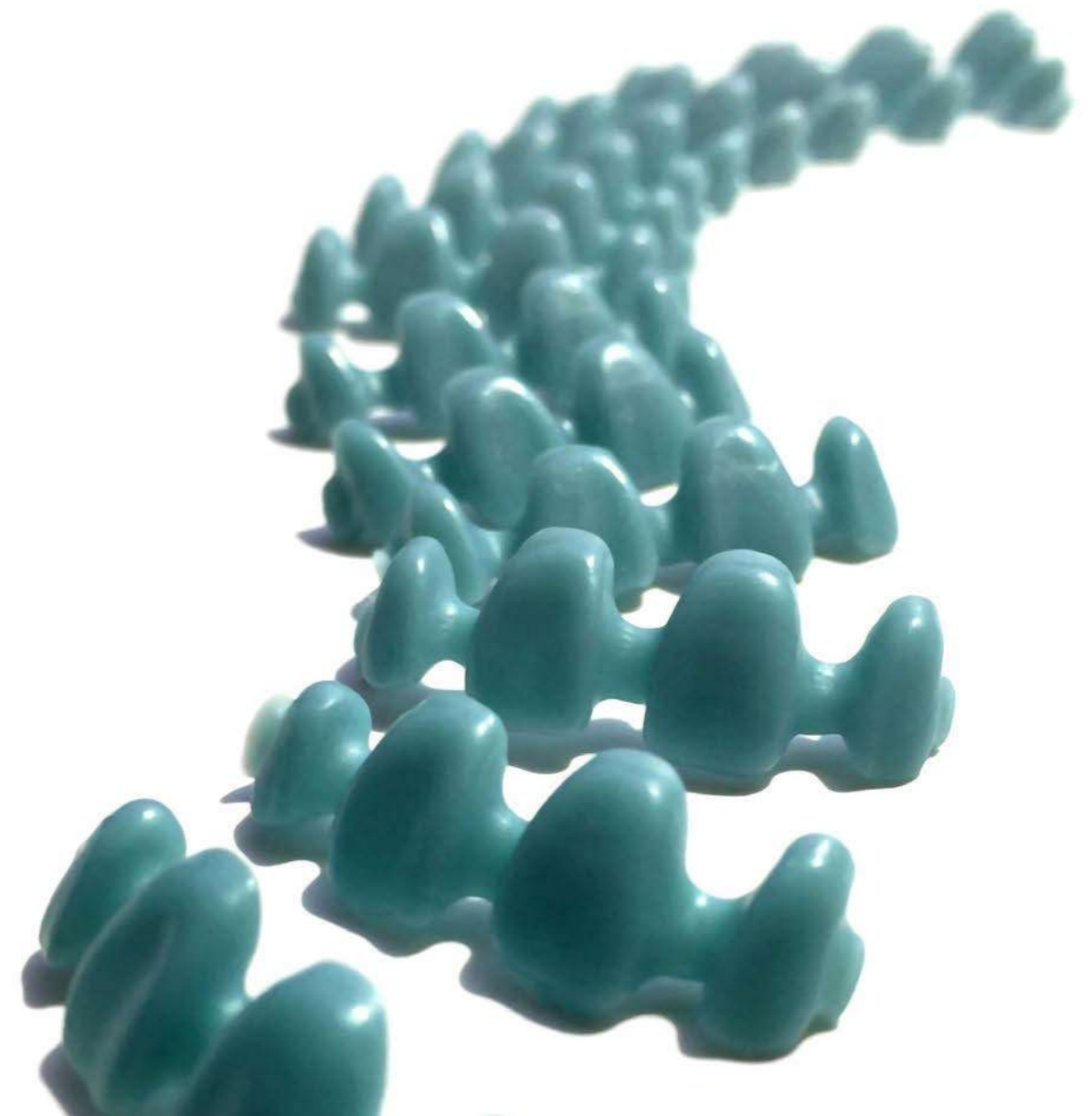
PREFG0021	<b>"G" LH MAXILLARY CENTRAL INCISOR</b> Completely castable hard wax; leaves no residue. Excellent modelling with deep cavities	Pieces per pack: 25
PREFG0022	<b>"G" LH MAXILLARY LATERAL INCISOR</b> Completely castable hard wax; leaves no residue. Excellent modelling with deep cavities	Pieces per pack: 25
PREFG0023	<b>"G" LH MAXILLARY CANINE</b> Completely castable hard wax; leaves no residue. Excellent modelling with deep cavities	Pieces per pack: 25
PREFG2627	<b>"G" LH MAXILLARY MOLAR</b> Completely castable hard wax; leaves no residue. Excellent modelling with deep cavities	Pieces per pack: 25
PREFG0011	<b>"G" RH MAXILLARY CENTRAL INCISOR</b> Completely castable hard wax; leaves no residue. Excellent modelling with deep cavities	Pieces per pack: 25
PREFG0012	<b>"G" RH UPPER FRONT</b> Completely castable hard wax; leaves no residue. Excellent modelling with deep cavities	Pieces per pack: 25
PREFG0013	<b>"G" RH MAXILLARY CANINE</b> Completely castable hard wax; leaves no residue. Excellent modelling with deep cavities	Pieces per pack: 25
PREFG1617	<b>"G" RH MAXILLARY MOLAR</b> Completely castable hard wax; leaves no residue. Excellent modelling with deep cavities	Pieces per pack: 25

## "GROUP - P" FORMAT PREFORMED WAX RIM

PREFP1222	<b>"P" UPPER FRONT GROUP</b> Completely castable hard wax; leaves no residue. Excellent modelling with deep cavities	Pieces per pack: 20
PREFP3242	<b>"P" LOWER FRONT GROUP</b> Completely castable hard wax; leaves no residue. Excellent modelling with deep cavities	Pieces per pack: 20
PREFP1417	<b>"P" RH MAXILLARY MOLAR GROUP</b> Completely castable hard wax; leaves no residue. Excellent modelling with deep cavities	Pieces per pack: 20
PREFP2427	<b>"P" LH MAXILLARY MOLAR GROUP</b> Completely castable hard wax; leaves no residue. Excellent modelling with deep cavities	Pieces per pack: 20
PREFP4447	<b>"P" RH MANDIBULAR MOLAR GROUP</b> Completely castable hard wax; leaves no residue. Excellent modelling with deep cavities	Pieces per pack: 20
PREFP3437	<b>"P" LH MANDIBULAR MOLAR GROUP</b> Completely castable hard wax; leaves no residue. Excellent modelling with deep cavities	Pieces per pack: 20

## "GROUP - G" FORMAT PREFORMED WAX RIM

PREFG1222	<b>"G" UPPER FRONT GROUP</b> Completely castable hard wax; leaves no residue. Excellent modelling with deep cavities	Pieces per pack: 20
PREFG3242	<b>"G" LOWER FRONT GROUP</b> Completely castable hard wax; leaves no residue. Excellent modelling with deep cavities	Pieces per pack: 20
PREFG1417	<b>"G" RH MAXILLARY MOLAR GROUP</b> Completely castable hard wax; leaves no residue. Excellent modelling with deep cavities	Pieces per pack: 20
PREFG2427	<b>"G" LH MAXILLARY MOLAR GROUP</b> Completely castable hard wax; leaves no residue. Excellent modelling with deep cavities	Pieces per pack: 20
PREFG4447	<b>"G" RH MANDIBULAR MOLAR GROUP</b> Completely castable hard wax; leaves no residue. Excellent modelling with deep cavities	Pieces per pack: 20
PREFG3437	<b>"G" LH MANDIBULAR MOLAR GROUP</b> Completely castable hard wax; leaves no residue. Excellent modelling with deep cavities	Pieces per pack: 20







ISOPOL



Universal wax-based insulator for separating polyurethane resins from polyethers.

**Features:**

- Easy to apply with the practical spray
- Leaves no residue
- It does not create thickness
- Valid gypsum-gypsum insulator on large surfaces

**Packaging:** 200 ml spray

**Code:** RES050006

AZ 23



**AZ 23 - ETHYL ACETATE**

Liquid suitable for perfect degreasing of ceramic metal trusses, before oxidation or during subsequent ceramization. To be used for immersion.

**Packaging:** 500 ml bottle

**Code:** VAR000060

BR10



Degreaser for all types of impressions. Removes traces of blood and saliva.

**Packaging:** 1 l bottle

**Code:** VAR000070

S.T.18 SPRAY



Contact point detector spray. To be applied to metals or gypsum.

**Features:**

- Ideal for the inside of crowns and for the adjustment of attachments
- Easy dosage in the desired points
- It is removed with a jet of steam or water

**Packaging:** 75 ml spray

**Code:** VAR000051

TEMPER



Liquid for cold tempering investment models for frame work prostheses.

**Features:**

- Hardens and seals the investment surface
- Easy to use
- Burns without leaving residues

**Packaging:** 1 l bottle

**Code:** RIV000184

OPAQUE SPRAY NEW



Makes the surface opaque, facilitating reading by scanning systems.

**Packaging:** 75 ml spray

**Code:** VAR000285

## MAGNETICS



Magnets with counter-magnets for the split-cast system.

### Features:

- Practical
- Magnet fixed to holder using resin
- Metal treated with anti-oxidiser

**Packaging:** box containing 20 pieces / box containing 100 pieces

Codes: VAR000282 10 pcs. + 10 pcs.  
VAR000283 50 pcs. + 50 pcs.

## TECHIFIT BLUE



Die spacer for creating relief on gypsum dies. Resistant to scratching and vaporisation. High adherence to gypsum dies.

### Features:

- 3 micron (transparent) and 10 micron (blue) thickness
- High adherence to gypsum dies
- Seals the gypsum porosity
- Resistant to scratching and vaporisation
- Package including dosing brush

**Colour and packaging:**  
Blue - 15 ml bottle with dosing brush

Code: VAR000120

## TECHIFIT LIGHT



Photo-curing lacquer to create relief on gypsum and resin dies. Leaves the surface polished and hard. Does not evaporate or thicken. Techifit Light is also used to isolate gypsum from thermoplastic materials. Max. temperature: 250°C

ATTENTION: DO NOT USE NYLON-BASED RESIN FOR INJECTION. (Protheus)

### Features:

- transparent, red and blue (10 micron) colour
- easy application
- leaves the surface polished and hard
- hardens evenly
- does not evaporate or thicken
- strong resistance to scratches and to thermal shocks

**Colour and packaging:**  
Red/Blue/Transparent - 30 ml bottle

Codes: VAR000121 Techifit Light - Red  
VAR000123 Techifit Light - Blue  
VAR000124 Techifit Light - Transparent

## UNIVERSAL SPRAY



Ideal to be sprayed on the aluminium cartridges as lubricant during the injection phase. Spray resistant to high temperatures, particularly ideal for thermoplastic resins.

**Packaging:** 500 ml spray

Code: SIL000500

## NIBS



Codes: Yellow nib SIL000163  
Light blue nib: thin tip SIL000167

\* The image is for illustration purposes only

## DUMBORS



Wax tension reducer; increases the smoothness of the moulded wax coating. Reduces the risk of micro-bubbles on melting.

**Packaging:** 125 ml spray

Code: VAR000080

## G.M.P.

Alcohol-based isolating material between gypsum and wax; it does not create thickness. Perfect separation of wax from gypsum, easy to spread.

**Packaging:** 50 ml bottle

Code: ISO000022



Certix is a universal mixing system for all types of ceramic. Certix is applied on numerous restorations and complex corrective firings both as humidifier of the ceramic paste and as modeling fluid to prolong the processing time of the blended layering ceramics.

**Features:**

- *Easy to work*
- *It does not require drying during layering*
- *It does not alter the color*
- *It keeps moisture of any ceramic*
- *The paste applied on the armature does not dry rapidly, becoming plastic and enabling a more precise modeling of the building.*
- *Shake before using*
- 

**Packaging:** 250 ml + 100 ml

**Code:** VAR000038

NOTE



Techim Group srl: Via Monte Grappa, 32 - 20020 Arese, Milan, Italy +39 (0)2 93581452

[www.techimgroup.com](http://www.techimgroup.com)